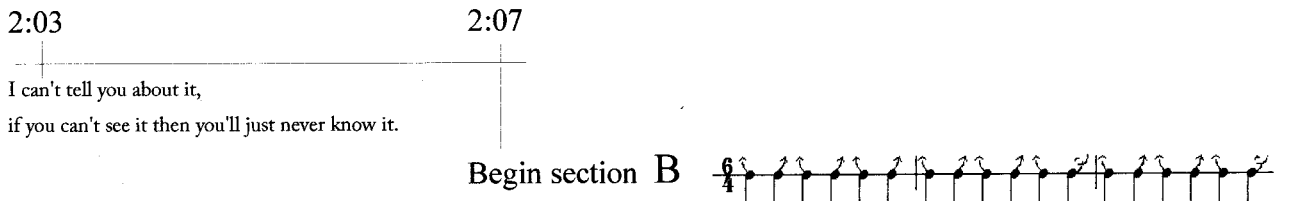
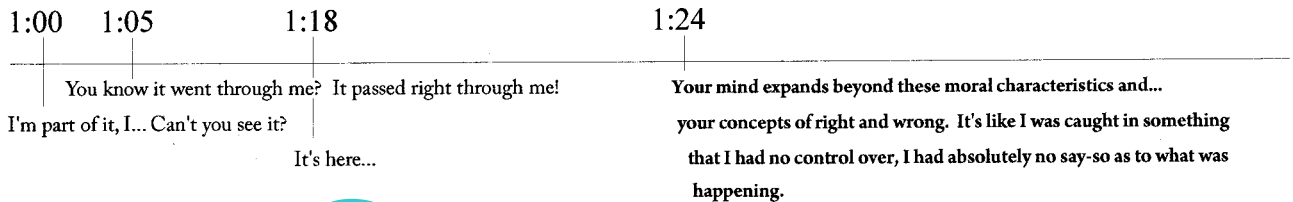
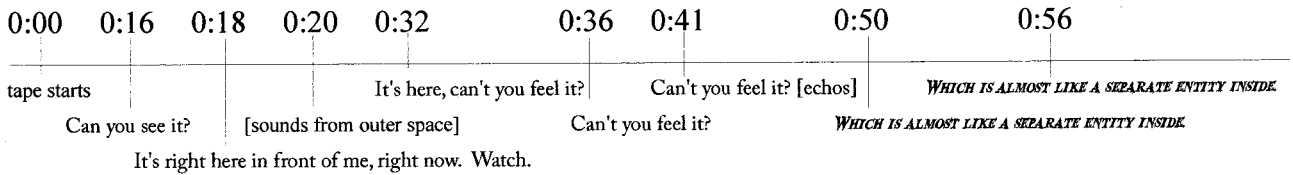


# A

## The Touched

The playback dialog cues are written below in seconds. The light is off until 1:50. The performance space should be completely dark. At 1:50 flicker the light in the sequence with the laughs as shown. Leave the light on at the 6<sup>th</sup> laugh.

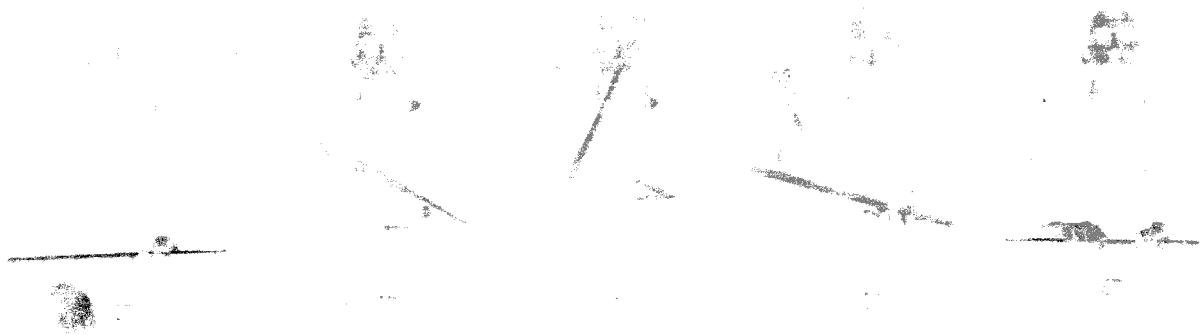


# C

## The Mixed Self

The visual instructions are from the perspective of the audience. The instructions are abbreviated in the rhythmic notation.

For example:

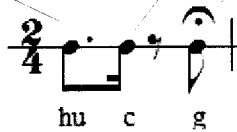


hit up

catch

grab

# Sample



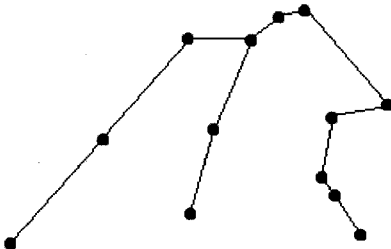
# D

## The Constellations

In the dark, draw the constellations in order from Aquarius to Capricorn with the LED lights. The constellations below are shown from the performer's prospective. Begin when the music starts. Pause at the point of each star, moving from one point to the next. Be sure to connect the dots as you move; the audience should see the lines between each star. Turn the lights on and off as needed to make the shapes. Draw the shapes clearly and carefully. Give a pause between each constellation to separate them from each other. Pace the speed so that the last light goes out when the music ends. The piece playing in the background is JS Bach's *C Major Prelude*, we sent this music into space in 1977. It was stored on a record aboard the Voyager space craft in case anyone might find it.



1) Aquarius



2) Pisces

